

資料集

年齢区分別・死因別の月別死亡数

2019年1月～2022年3月

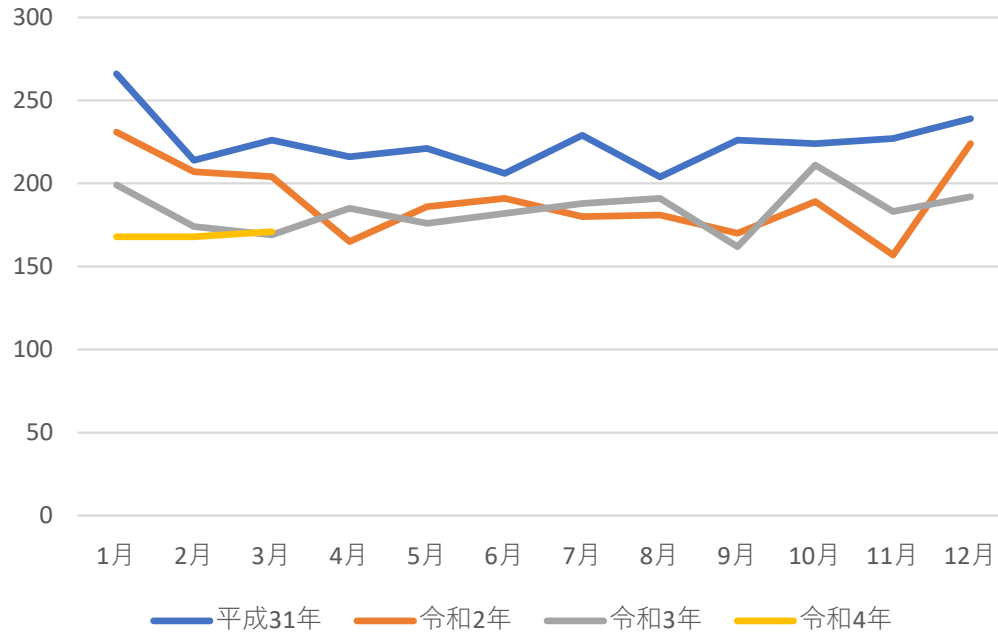
人口動態統計月報(概数) より

メンタルケア協議会

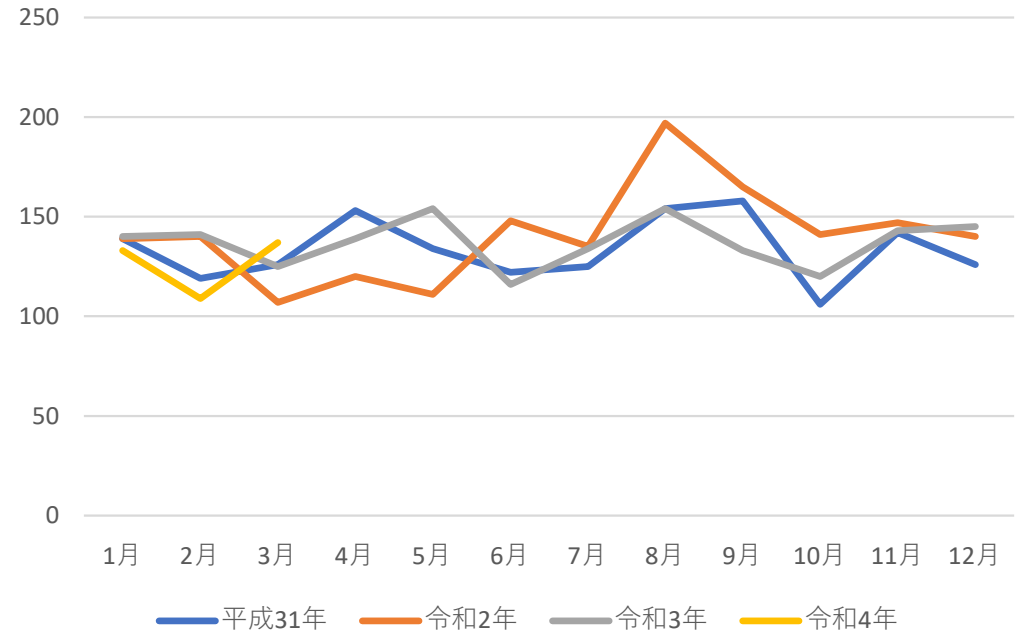
羽藤 邦利

死亡総数

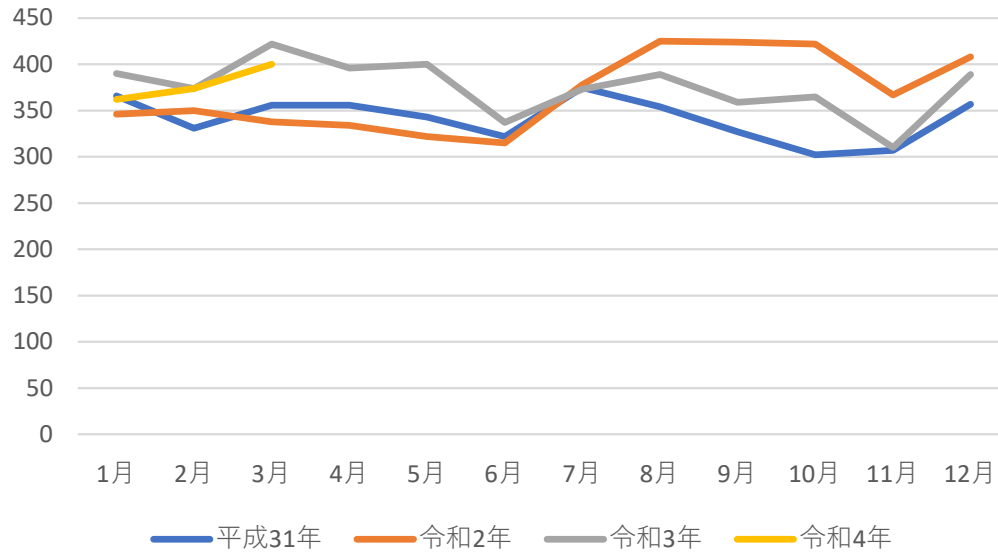
0-9歳



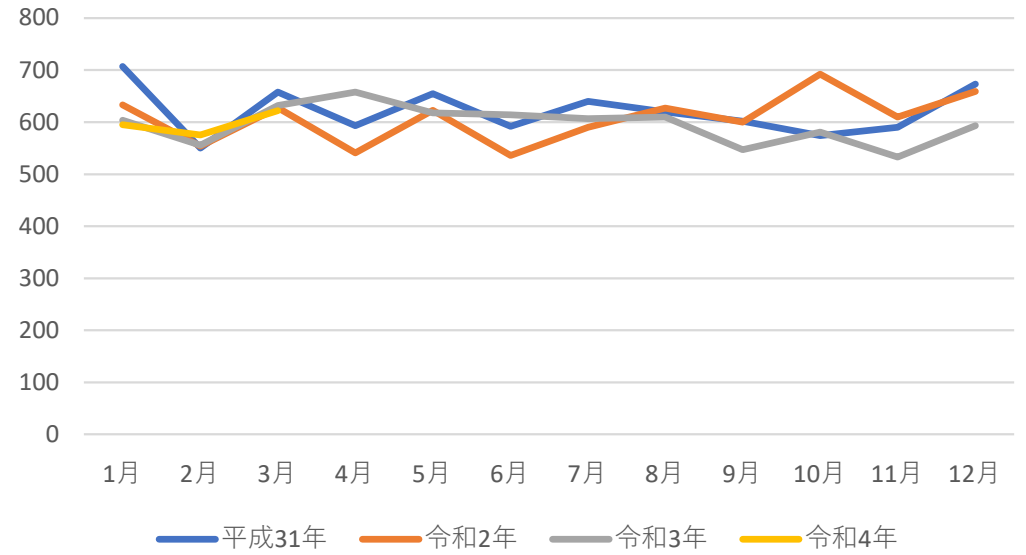
10-19歳



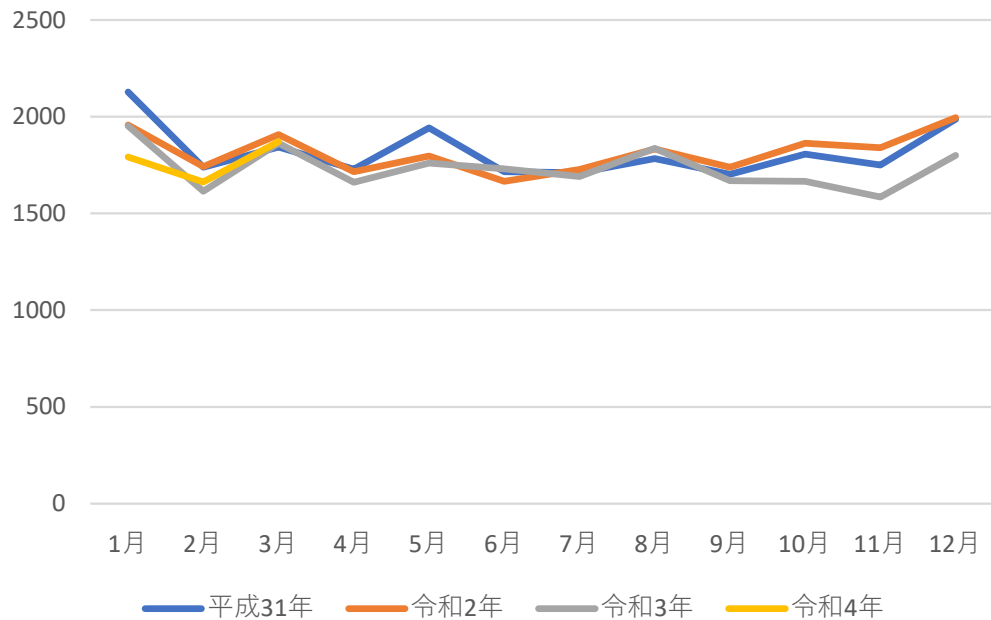
20-29歳



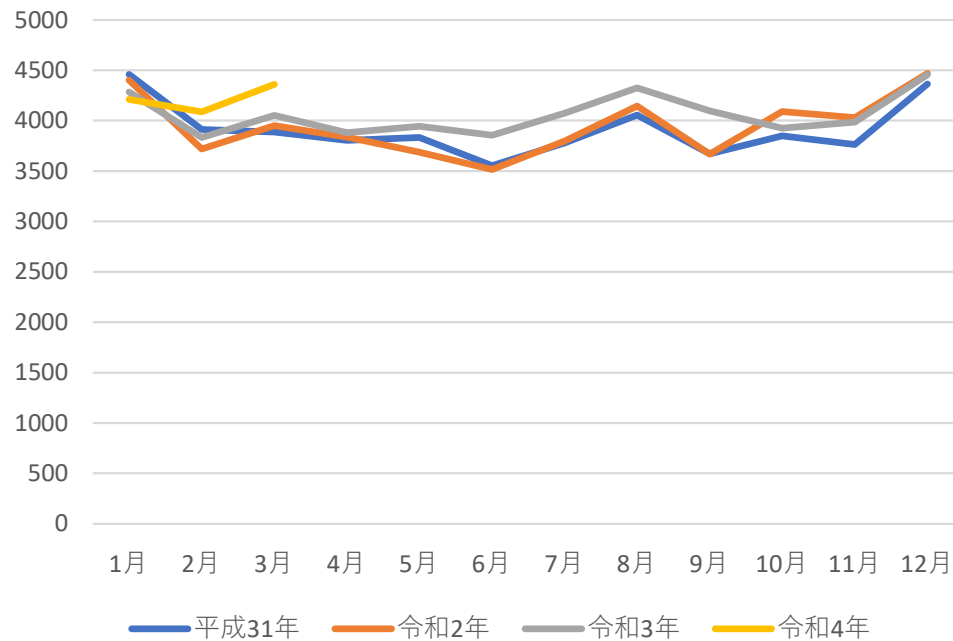
30-39歳



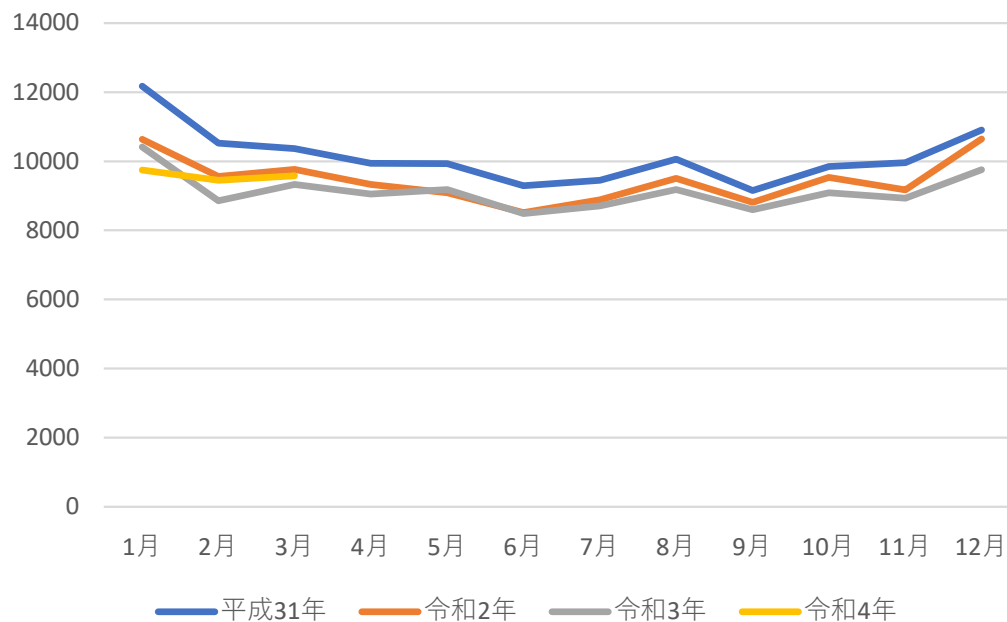
40-49歳



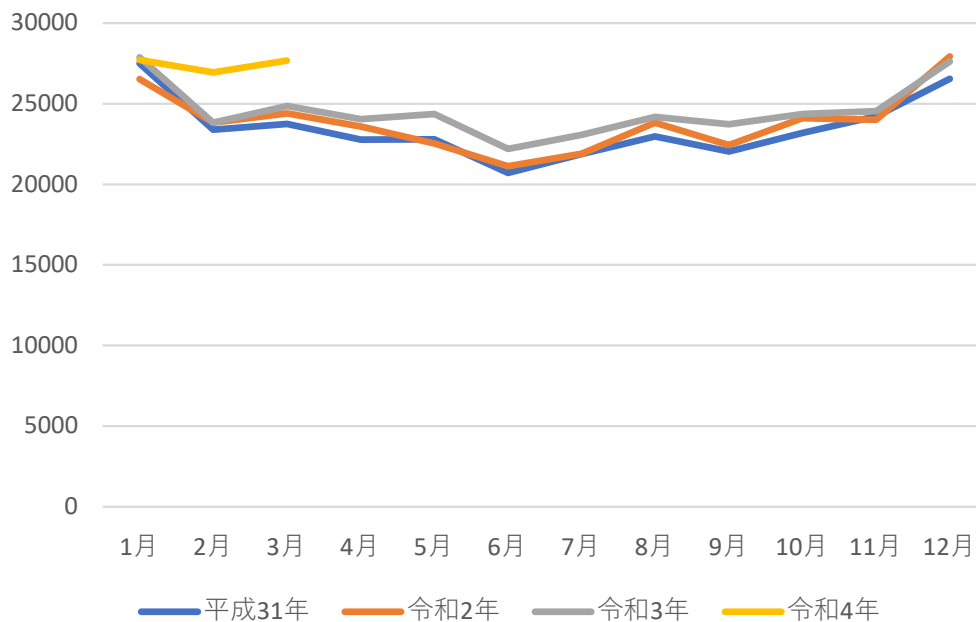
50-59歳



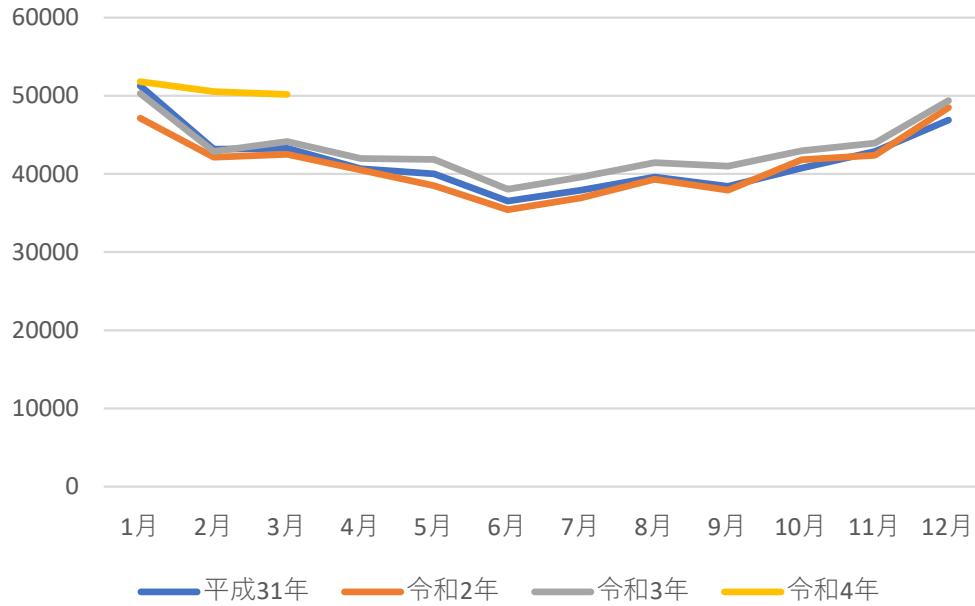
60-69歳



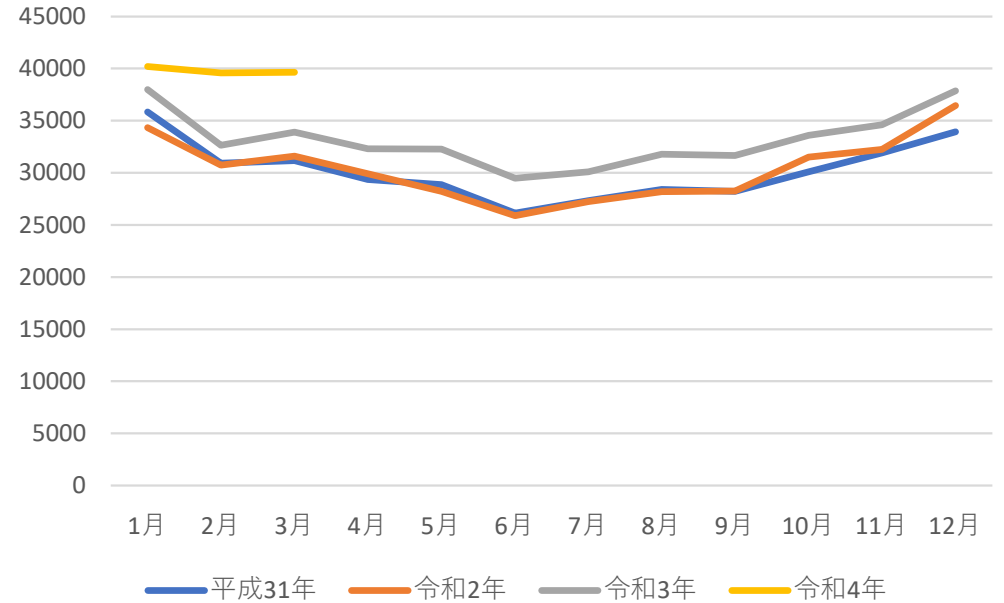
70-79歳



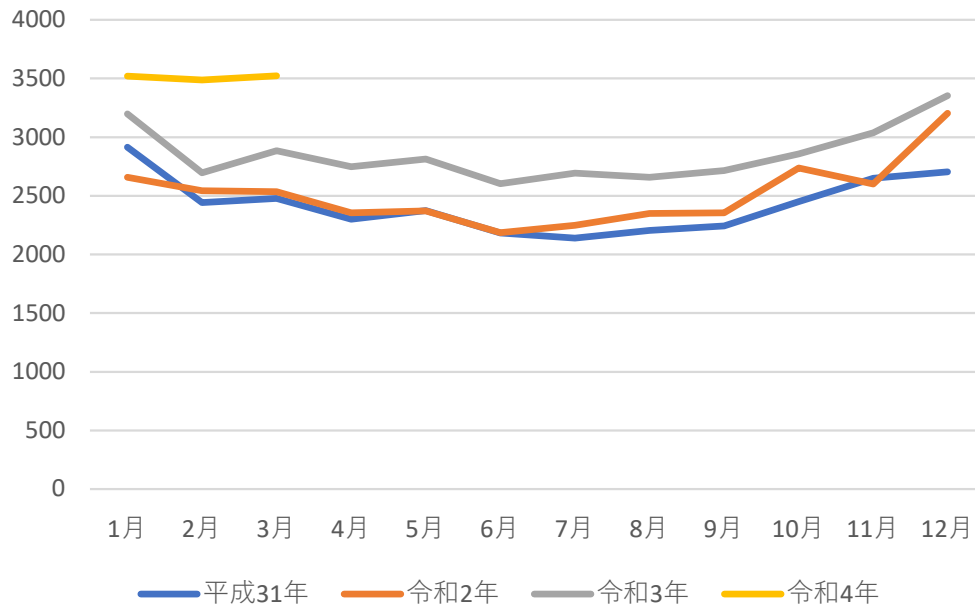
80-89歳



90-99歳



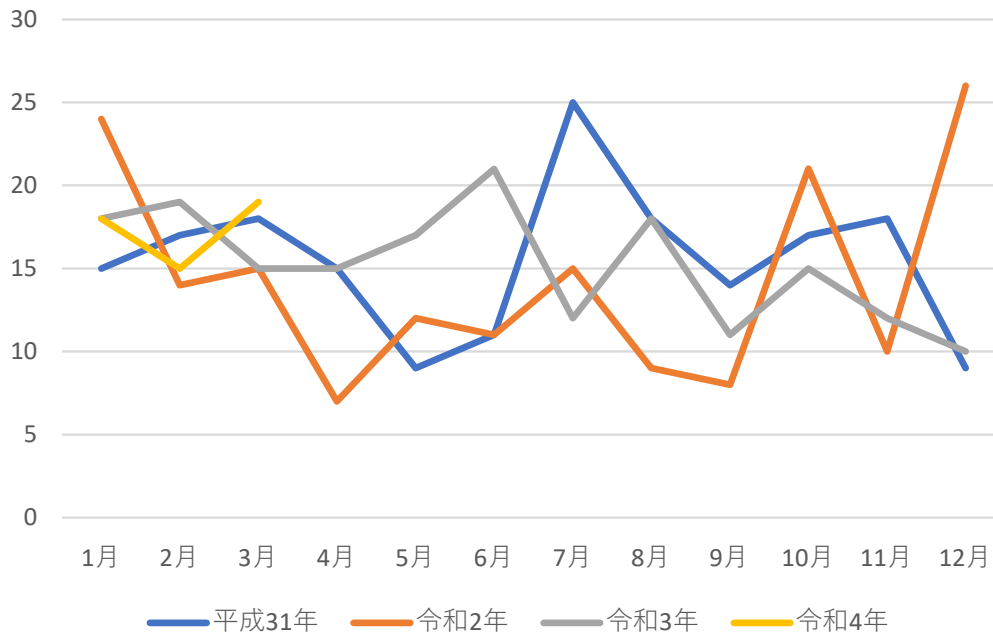
100歳以上



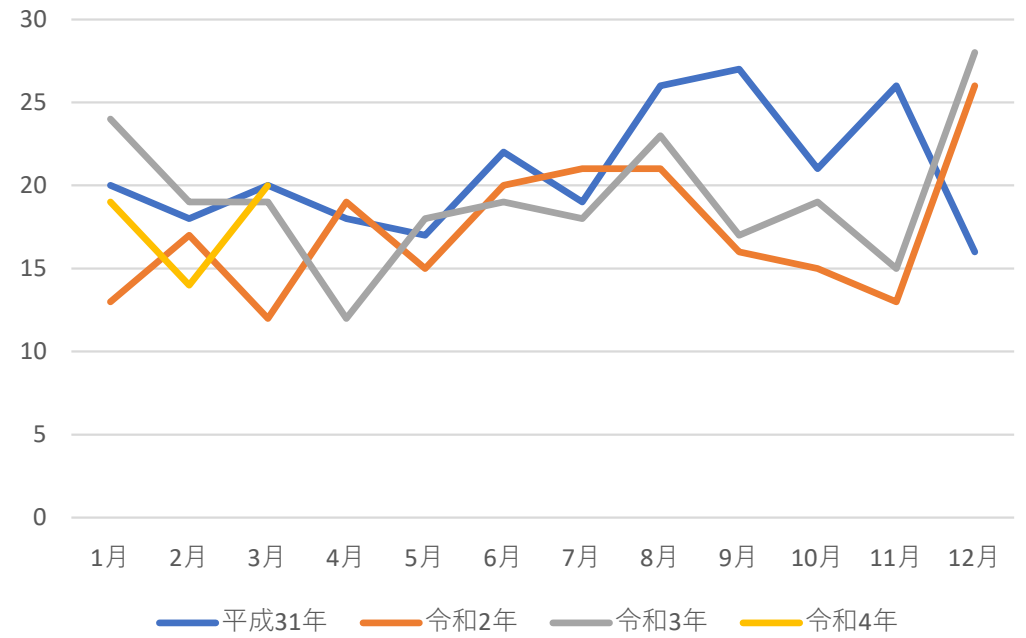
**死亡総数は
令和4年初めより
50才代と70才代以上で急増**

恶性新生物

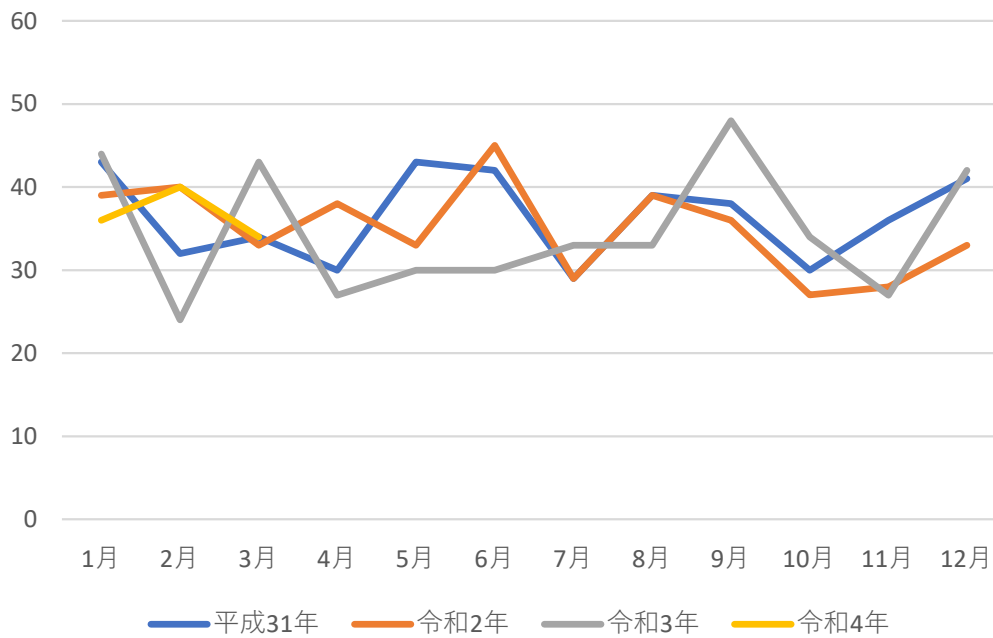
0-9歳



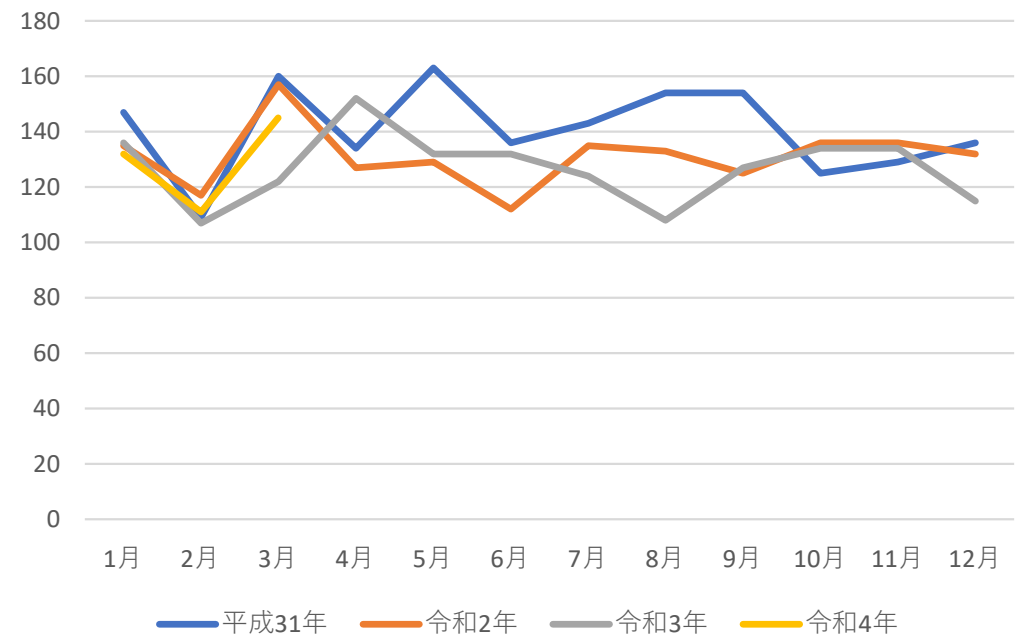
10-19歳



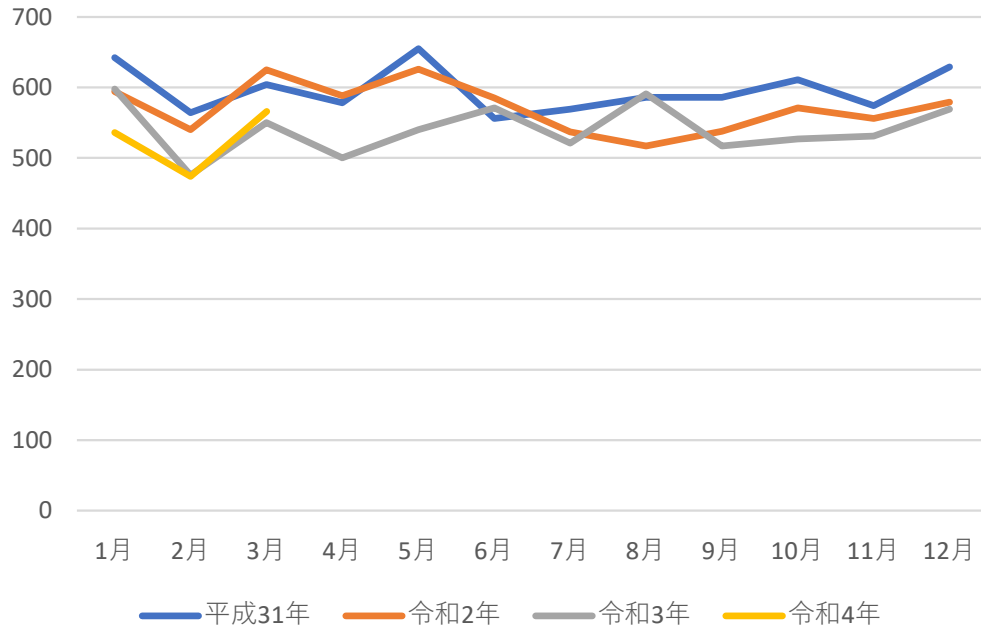
20-29歳



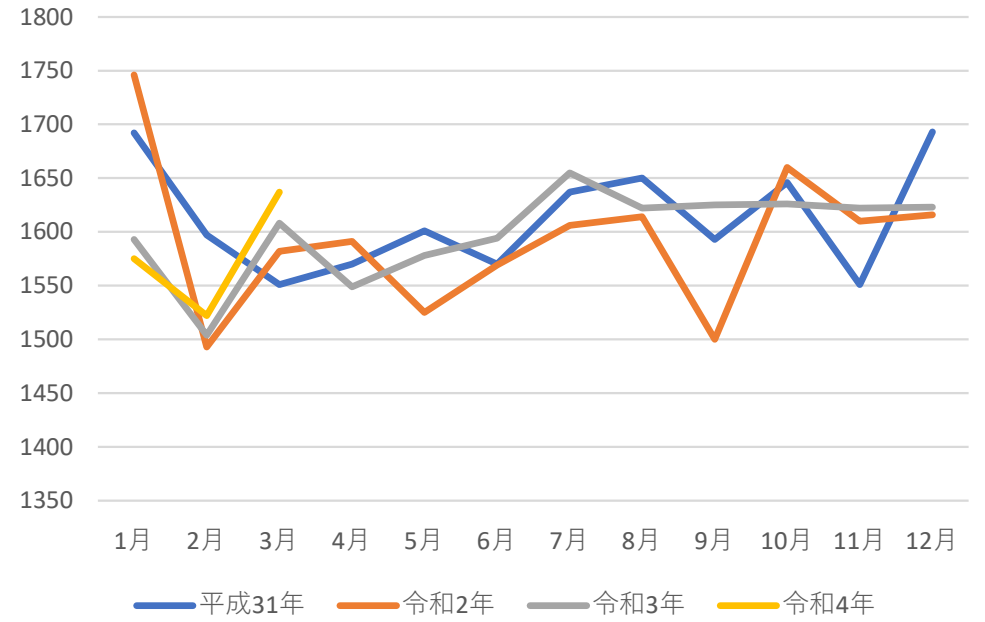
30-39歳



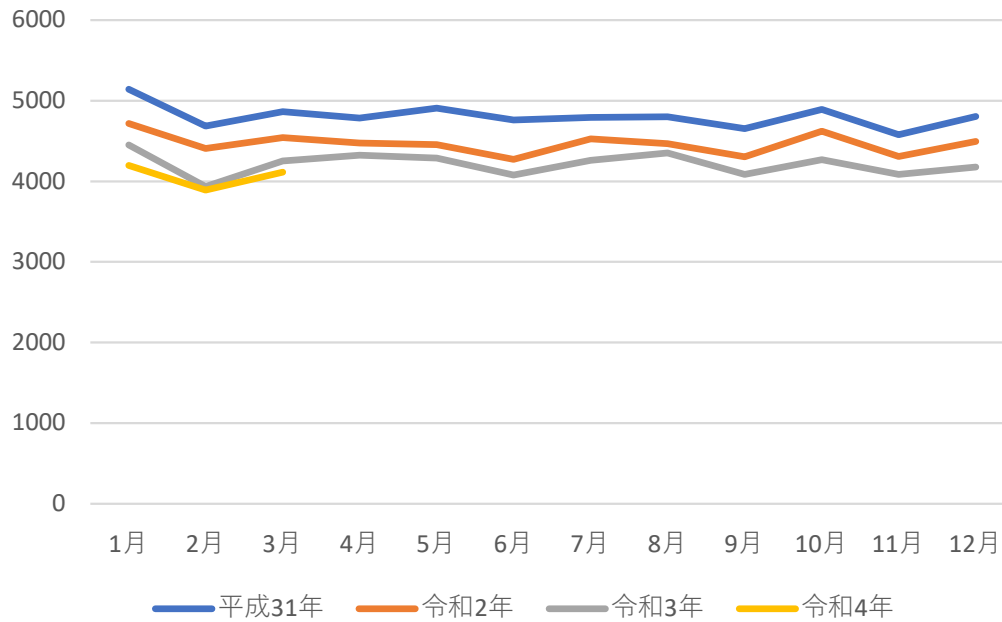
40-49歳



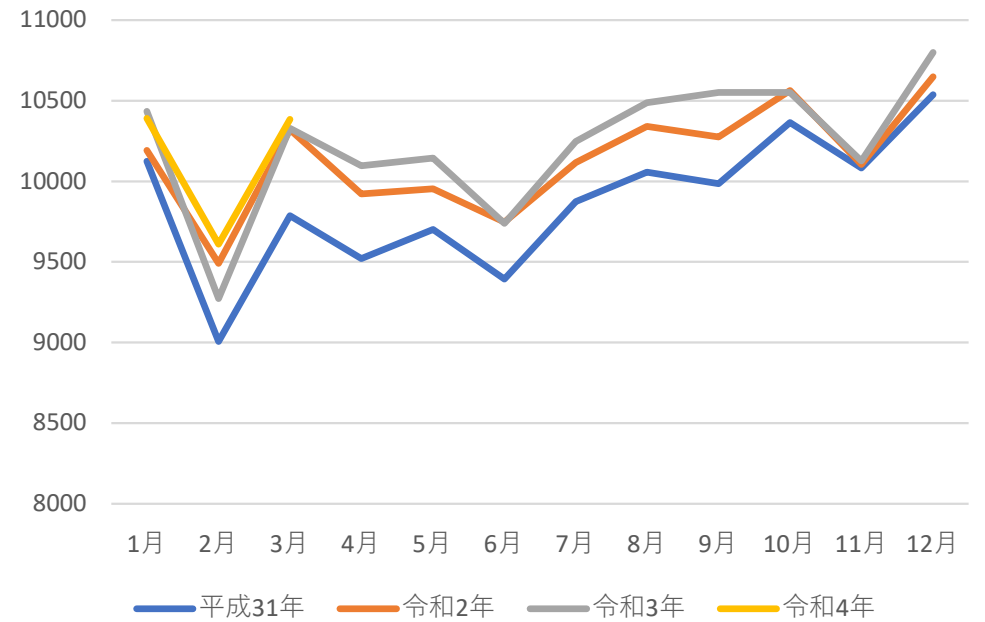
50-59歳



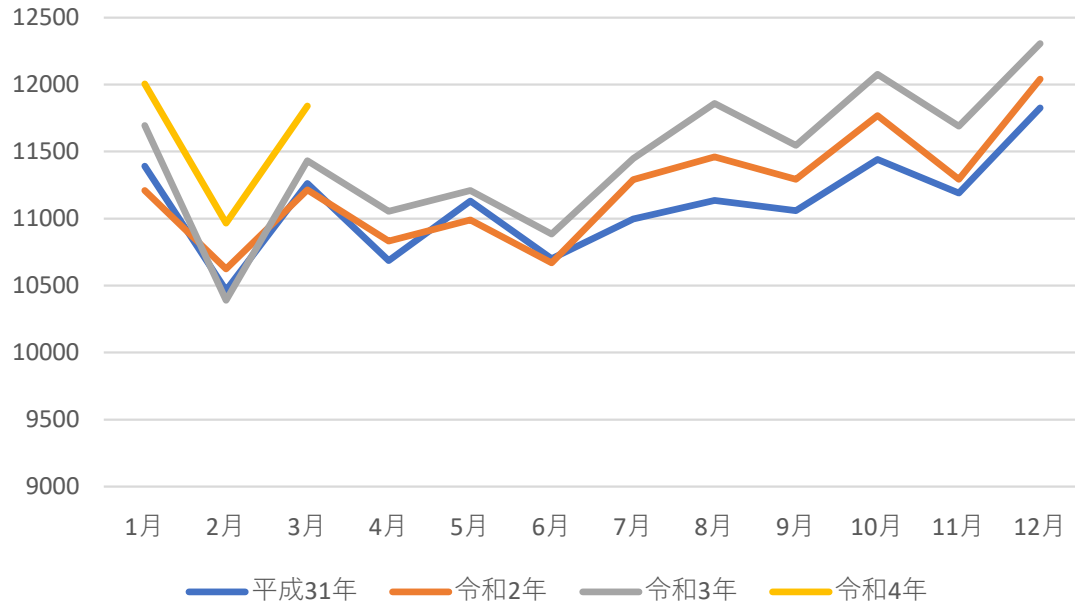
60-69歳



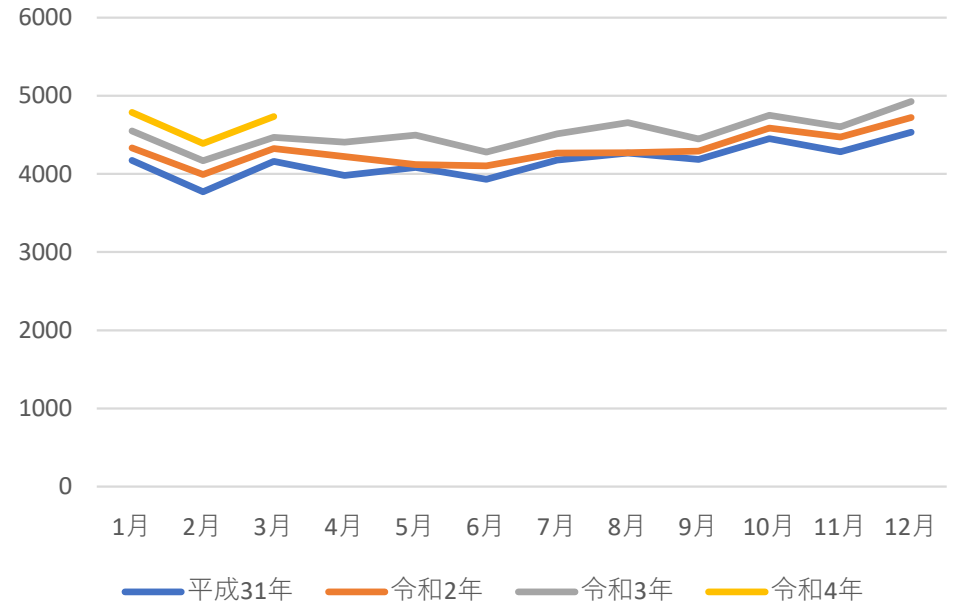
70-79歳



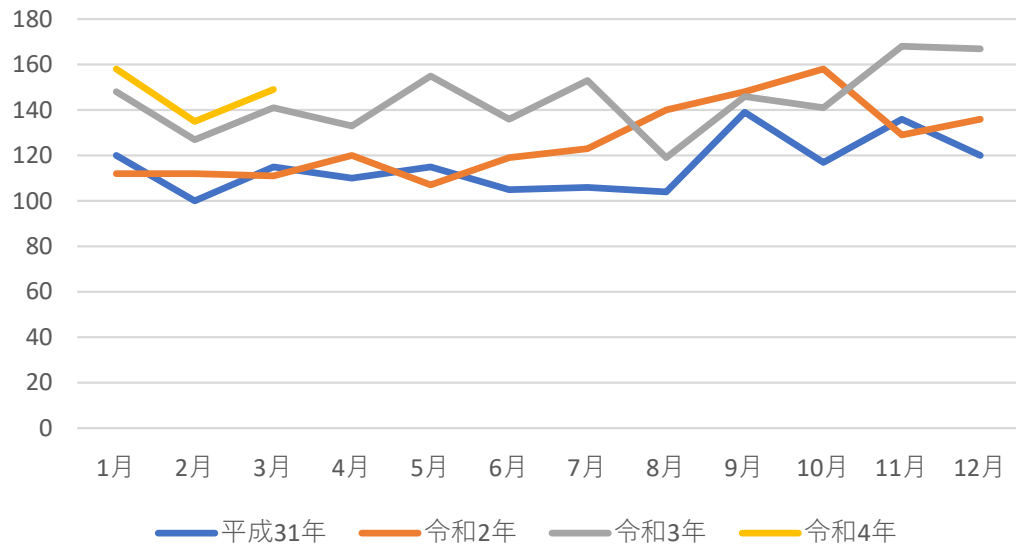
80-89歳



90-99歳



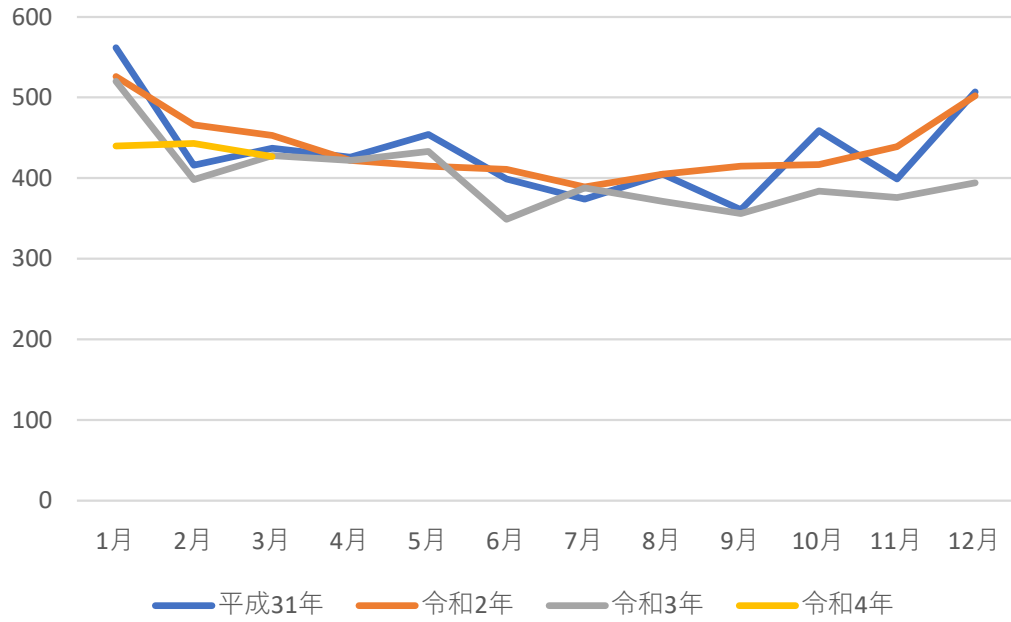
100歳以上



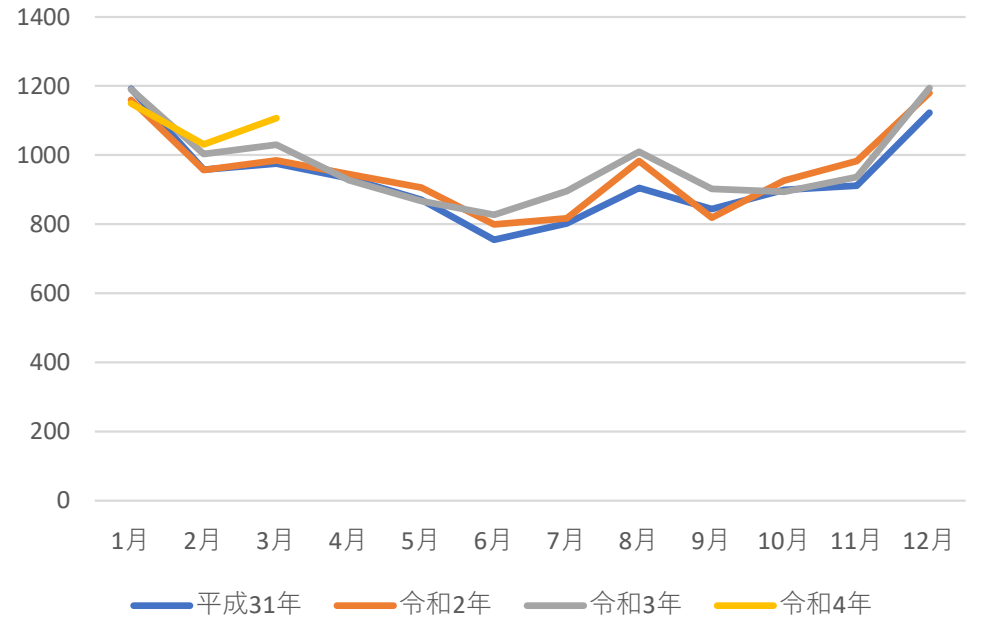
悪性新生物による死亡
令和2年より
70才代以上で増加傾向だが、
顕著ではない

循環器系の疾患による死亡

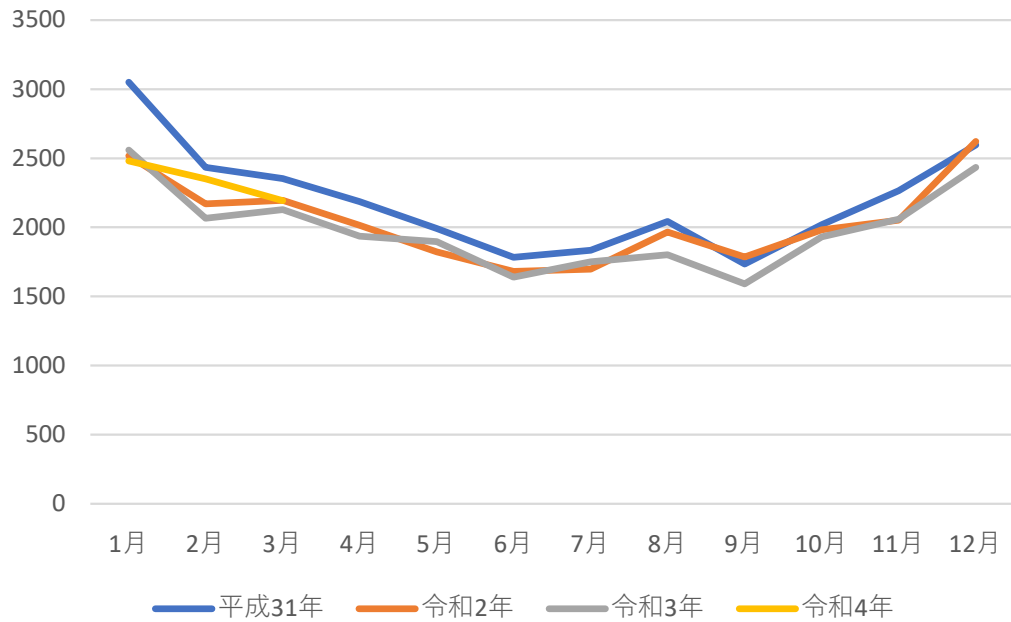
40-49歳



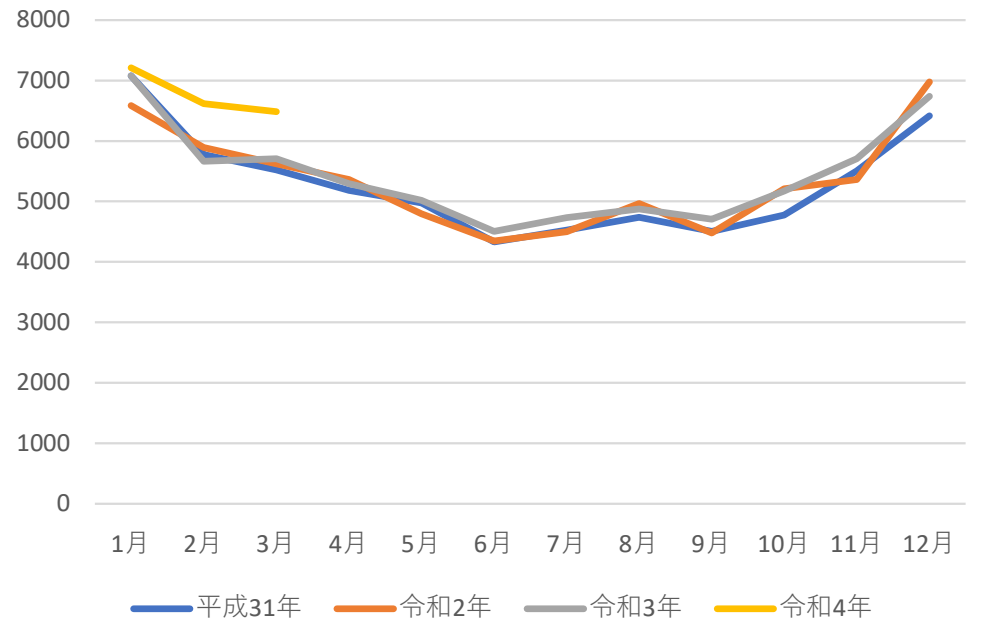
50-59歳



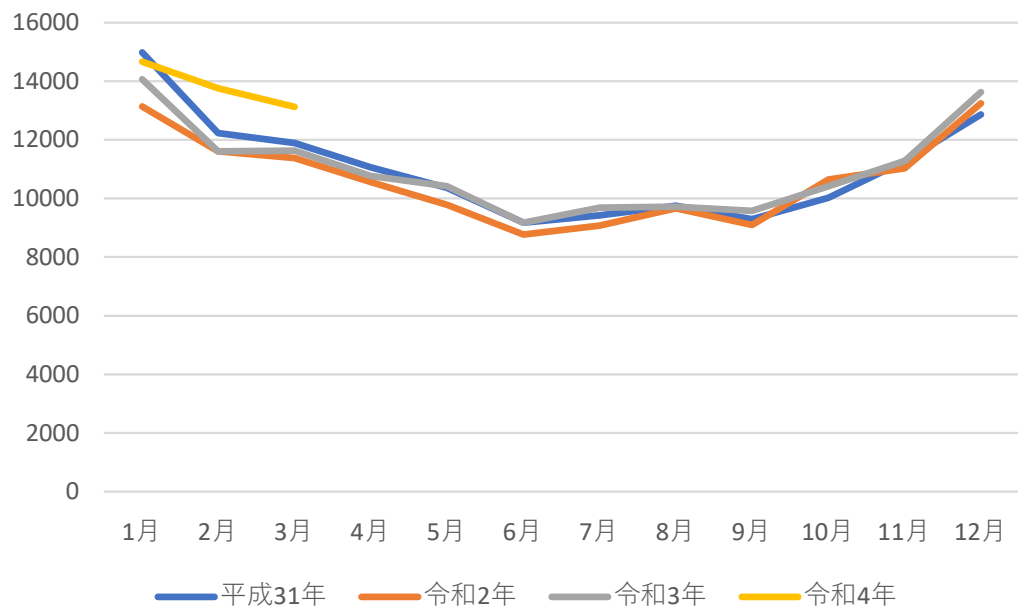
60-69歳



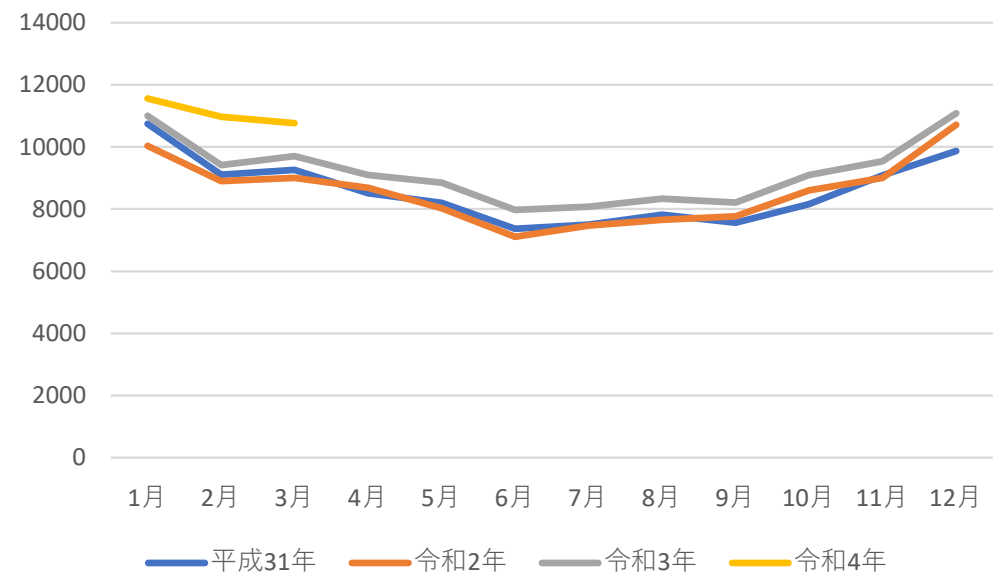
70-79歳



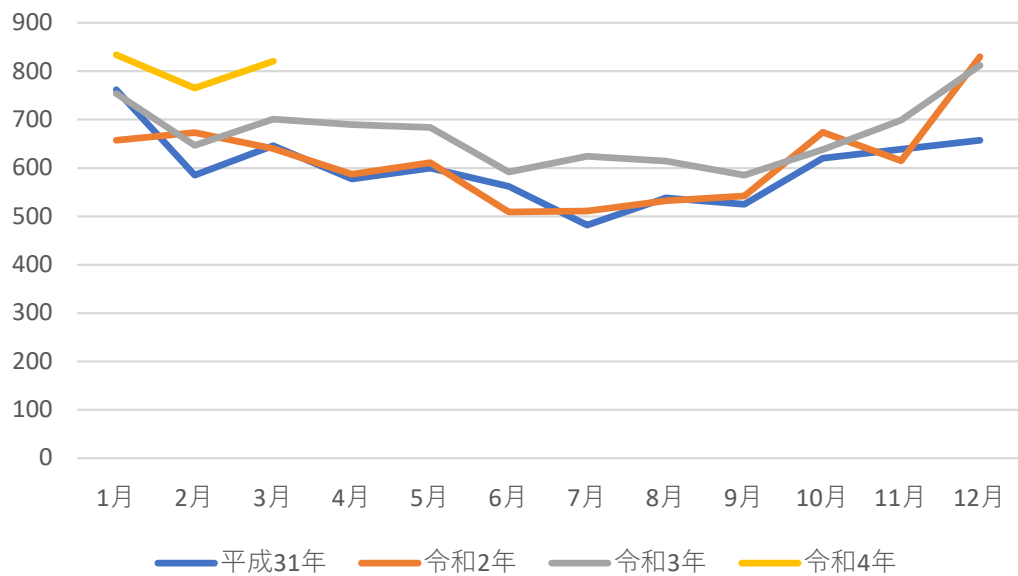
80-89歳



90-99歳



100歳以上

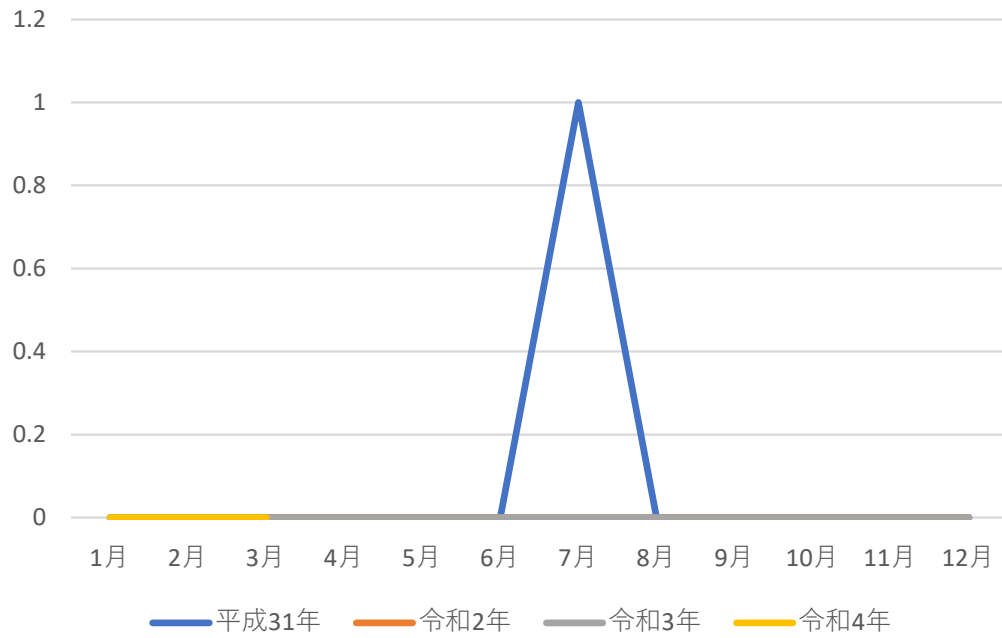


循環器系の疾患による死亡
令和4年初めより
50才代と70才代以上で急増

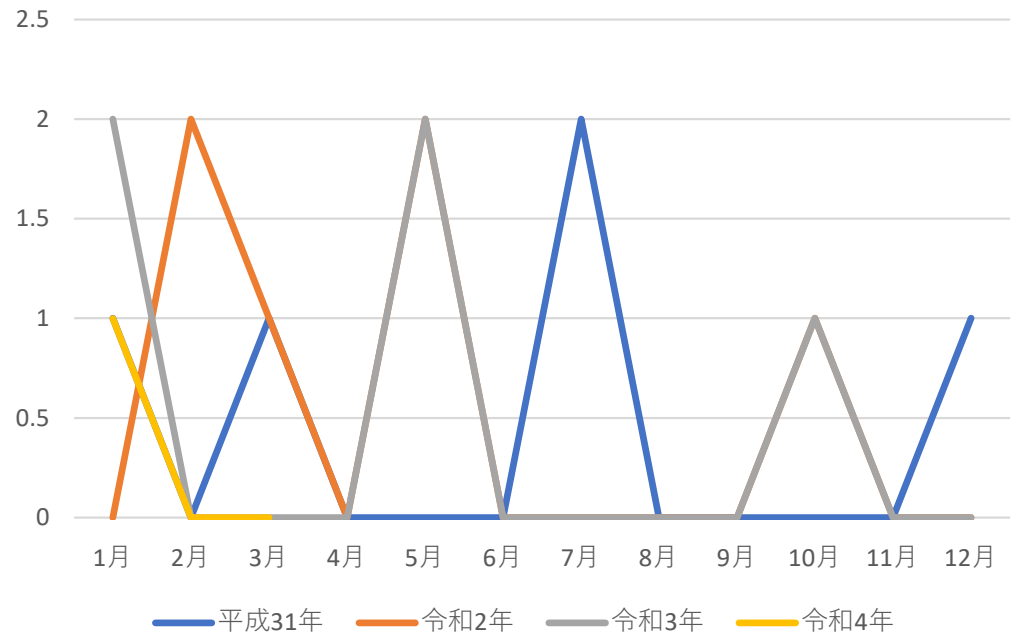
精神及び行動の障害による死亡

(9割が“血管性及び詳細不明の認知症”によるもの)

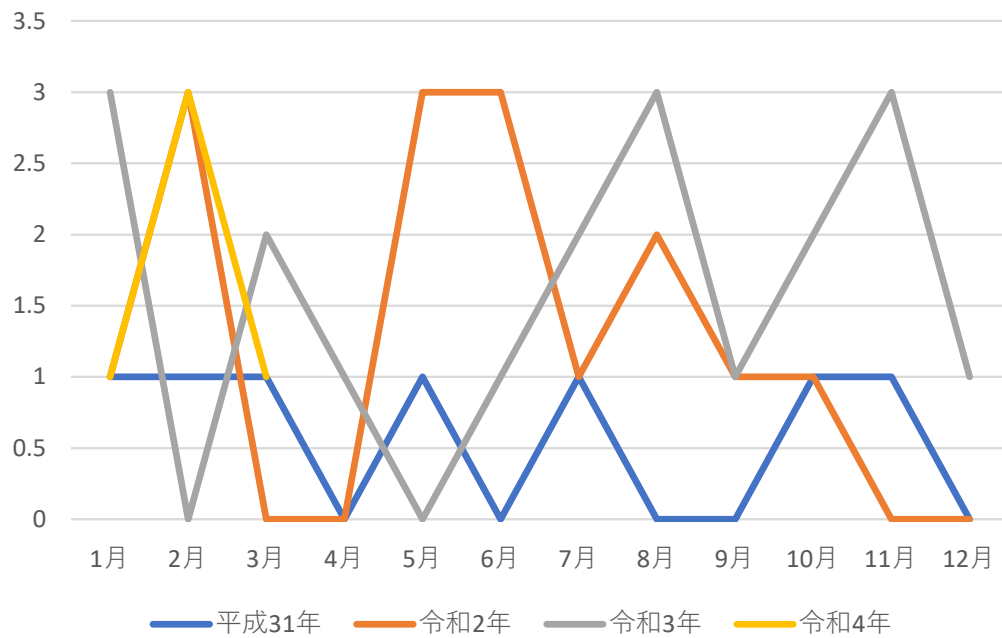
0-9歳



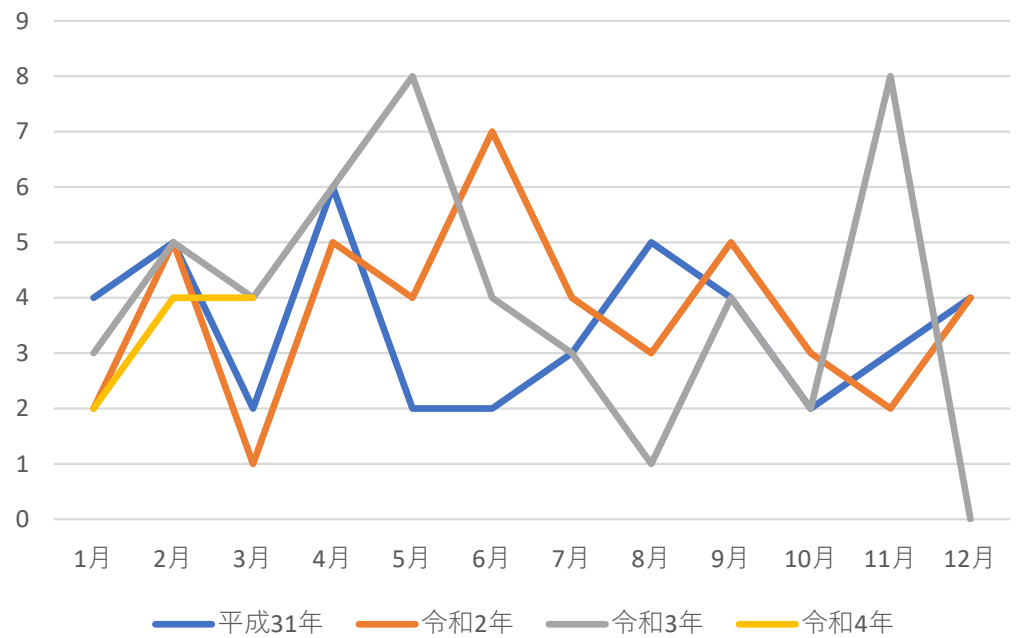
10-19歳



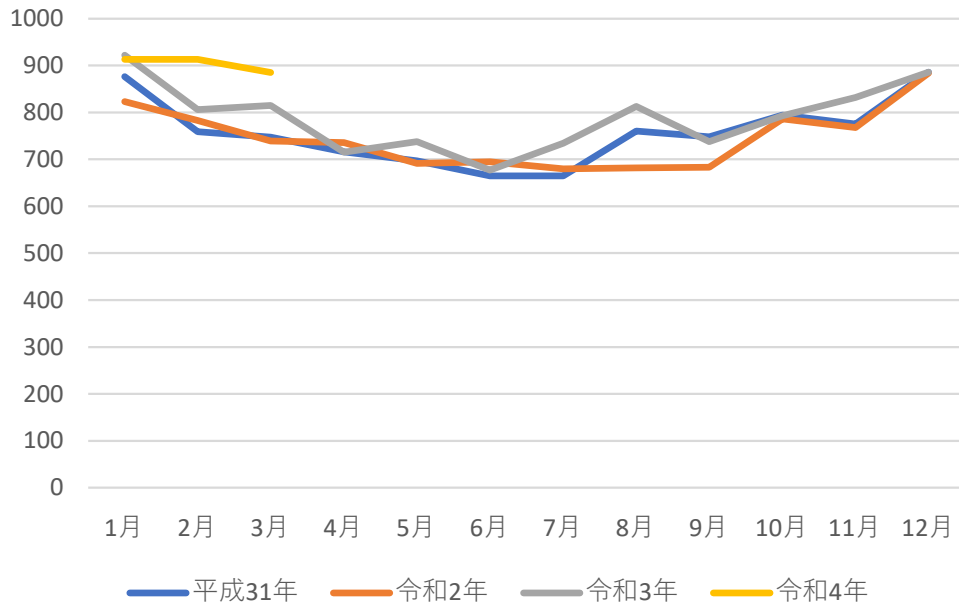
20-29歳



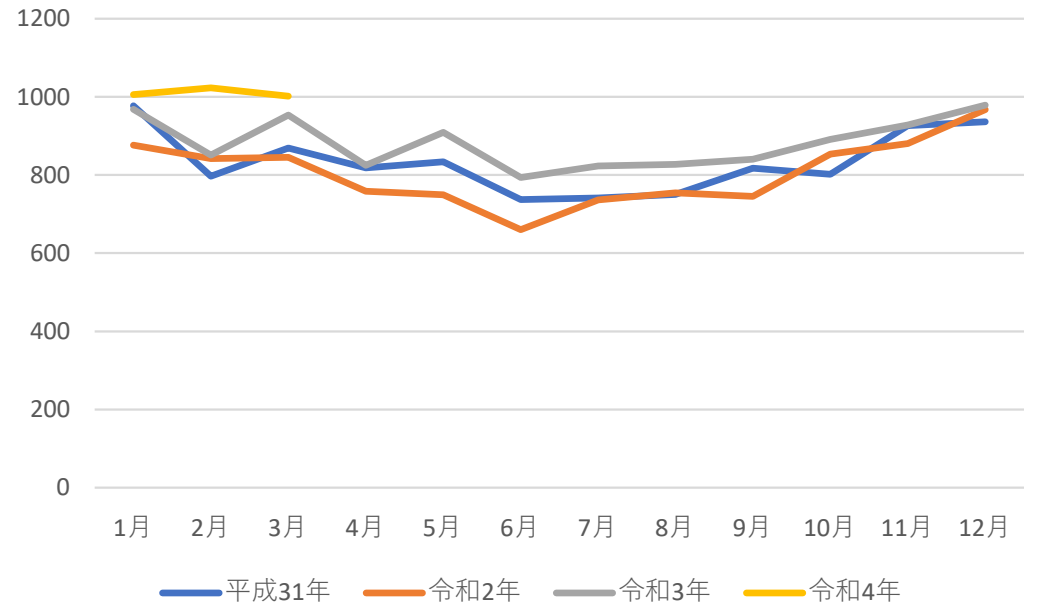
30-39歳



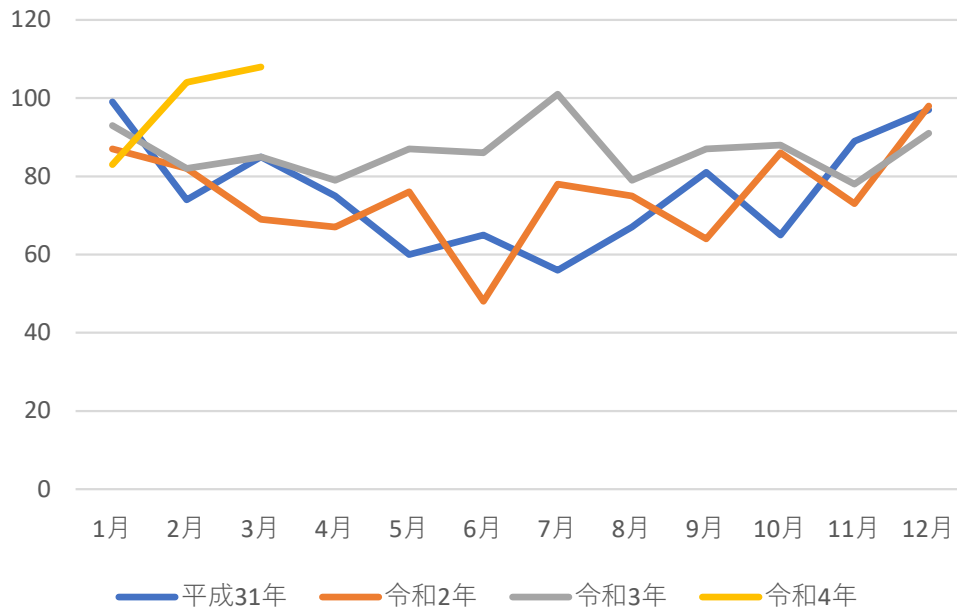
80-89歳



90-99歳



100歳以上



精神及び行動の障害による死亡
令和4年初めより
60才代以上で急増